



# Sailing Instructions

2016 North American blokart Sailing Championships

*and*

2016 blokart World Championships

Ivanpah Dry Lake

California, USA

Organised by blokart International Ltd  
Hosted by the North American Blokart Sailing Association

[www.blokartworlds.com](http://www.blokartworlds.com)



## 1. Event Schedule

### 2016 Pre-Worlds regatta

#### Registration & Weigh in

(Primm Valley Resort – near Banquet Hall)

Monday 4 April 2016  
11:00 til 14:00

#### Measurement (Scrutineering)

(Campsite – Main Tent)

Monday 4 April 2016  
12:00 til 16:00

#### Race Day 1

Briefing (Campsite – Main Tent)

Racing

Happy Hour (Campsite – Main Tent)

Tuesday 5 April 2016  
10:00  
11:00 til 18:00  
17:30 til 18:30

#### Race Day 2

Briefing (Campsite – Main Tent)

Racing

Happy Hour (Campsite – Main Tent)

Wednesday 6 April 2016  
10:30  
11:00 til 18:00  
17:30 til 18:30

### 2016 World Championships

#### Registration & Weigh in

(Primm Valley Resort – near Banquet Hall)

Friday 8 April 2016  
9:00 til 10:30

#### Measurement (Scrutineering)

(Campsite – Main Tent)

Friday 8 April 2016  
10:00 til 12:00

#### *Welcome Dinner & Pre-Worlds presentation*

(Primm Valley Resort – Banquet Hall)

*Friday 8 April 2016  
19:00*

#### Race Day 1

Briefing (Campsite – Main Tent)

Racing

Happy Hour & Daily Prize giving (Campsite – Main Tent)

Saturday 9 April 2016  
10:00  
11:00 til 18:00  
18:00 til 19:00

#### Race Day 2

Briefing (Campsite – Main Tent)

Racing

Happy Hour & Daily Prize giving (Campsite – Main Tent)

Sunday 10 April 2016  
10:30  
11:00 til 18:00  
18:00 til 19:00

#### Race Day 3

Briefing (Campsite – Main Tent)

Racing

Happy Hour & Daily Prize giving (Campsite – Main Tent)

Monday 11 April 2016  
10:30  
11:00 til 18:00  
18:00 til 19:00

#### Lay Day (reserve day \*\*)

Tuesday 12 April 2016

\*\* If 9 races are not completed in each division by the end of day 3, then racing will take place on the lay day. Briefing will be at 10:30 with racing between 11:00 & 18:00.

#### Race Day 4

Briefing (Campsite – Main Tent)

Racing

Happy Hour & Daily Prize giving (Campsite – Main Tent)

Wednesday 13 April 2016  
10:30  
11:00 til 18:00  
18:00 til 19:00

#### Race Day 5

Briefing (Campsite – Main Tent)

Racing

Thursday 14 April 2016  
10:30  
11:00 til 15:00

#### *Presentation Dinner*

(Primm Valley Resort – Banquet Hall)

*Thursday 14 April 2016  
19:00*

## 2. Venue

Ivanpah dry lake bed, California, United States of America.

Details as per Notice of Race Section 2,

All competitors must adhere to the NABSA & BLM rules – see appendix B

## 3. Eligibility, Entries and Fee's

Competitors must meet the criteria set out in the Notice of Race Section 3

## 4. Classes, Divisions, Categories & Prizes

4.1 The classes and divisions are as per The International blokart Racing Association (IBRA) rules edition 5 Part A

4.2 The Categories and prizes are as per the Notice of Race Section 4.

## 5. Registration and scrutineering procedure

The registration procedure is as follows.

### First registration

Monday 4<sup>th</sup> April 2015 for those competing in BOTH events or the North American Blokart Sailing Championships, Friday 8<sup>th</sup> April 2015 for those competing in the Worlds ONLY.

Step 1: Check in at the registration room (located at the Primm Valley Resorts conference centre, near the banquet hall) for registration.

Step 2: Weigh in at the weigh in desk (same location). Weigh in requirements as set out in The International blokart Racing Association (IBRA) rules edition 5 rule A.5

Step 3: Present your kart and ALL equipment you intend on using to the scrutineers (located at the main tent on the lake bed)

### Worlds weight check

For those who competed in the North American blokart Sailing Championships, you are required to present for a weight check on Friday 8<sup>th</sup> April 2015. This weight check will be located in the Primm Valley Resorts conference centre, near the banquet hall as per registration.

You will be weighed as per the requirements of The International blokart Racing Association (IBRA) rules edition 5 rule A.5

## 6. Rules & Sailing Instructions

### 6.1 Racing Rules

All racing will be conducted under;

The International blokart Racing Association (IBRA) rules edition 5 Amendment 1

### 6.2 Daily Briefings

Attendance at the daily briefings, and any other competitor briefing called, is mandatory. A competitor that misses a briefing may not be permitted to race.

### 6.3 Protests & Redress

Protest and redress forms will be available at the start grid by seeing the start grid marshal on duty at the time. Protest forms shall be lodged with the start grid marshal on duty along with the US\$20 protest fee.

## 6.4 Equipment Rules

The IBRA equipment rules [part B] will apply, with the following additions

- 6.4.1 **Brakes**  
Drag brakes, those that brake using contact with the lake bed, are strictly prohibited.
- 6.4.2 **Pulley Whip Flags**  
The supplied pulley whip flags must be displayed while racing.

## 6.5 Mark Roundings

IBRA rule E.9 is reworded to the following;

*E.9 Marks and Obstructions Overlapped*

*When blokarts with the wind coming from the same side and overlapped enter the zone;*

- *An outside blokart shall keep clear of an inside blokart*
- *An inside blokart shall sail their proper course around the mark or obstruction.*
- *If the overlap is broken or the blokarts are required to tack or gybe inside the zone, the blokart that was on the outside shall continue to keep clear of the blokart that was on the inside.*
- *After passing the mark or obstruction this rule ceases to apply, however, the blokart that becomes the right of way blokart must give the other room to keep clear under rule E.6.*

*When blokarts have the wind coming from the opposite sides, rule E.1 applies, even if the blokart required to keep clear must miss the mark to do so.*

## 6.6 Flags & Sound Signals

Flags used will be as per IBRA rule E. 17 e and f. Except that the optional RED flag will NOT be used.

The following sound signals may be used by the race officers and / or start system

- Tone 1 - Higher frequency short pip, used to count down the last 5 seconds to the start of the count down or the race start, in the event of failure this will not be replaced
- Tone 2 - Lower frequency long beep, used as the sound signal for the start and the race finish, in the event of failure this may be replaced with an air type hooter
- Air type hooter - as a replacement for Tone 2 in the event of failure, plus
- 1 extra long blast to call for a race start, if racing is delayed
  - 3 long blasts to call for a special briefing (maybe repeated several times)

The failure of sound signals or flag being displayed at the end of the race time shall not be grounds for redress.

## 6.7 Penalties

IBRA Rule F.2 is reworded to the following;

*F.2 (a) The penalty for a competitor who does not follow Part B, C or E of these rules (excluding E.16 and E.17d) shall be disqualification (DSQ) by the protest committee following a protest by another competitor.*

*F.2 (b) Race officers may disqualify a competitor for breaches of the Part C and rules E.14, E.15, E.17b, & E.17 c, without hearing. Competitors who believe the race officers have made an error in their action may request redress.*

*F.2 (c) Scrutineers can disqualify competitors for a breach of Part B.*

## 6.8 Redress

IBRA Rule G.8 is reworded to the following:

*G.8 A request for redress shall be made on the redress request form and must be lodged within 1 hour of the race for which redress is requested, or 30 minutes after the posting of that race's results, whichever is later. A request for redress may be because a competitors finishing place in a race has through no fault of their own been made significantly worse by*

- *An improper action or omission of the race officers*

- *being disadvantaged by the action of a competitor that was breaking a rule of part E*
- *Giving help to another competitor*

*See appendix F for the form. Forms are to be lodged with the race officers or other nominated person in the sailing instructions or at a briefing.*

## 6.9 Advertising Requirements

The portion of the sail below the boom is to be reserved for the event logo and/or an event sponsors logo. Advertising or logos must not be of a type that could be considered offensive or immoral. If in doubt seek permission from the event organisers. Graphics need not be of BIL supply.

Blokarts which fail to display the supplied logo may be subject to disqualification by the race committee. A Blokart may not protest another blokart under this requirement.

## 6.10 Sailing Instructions

In the event of conflict between these sailing instructions and notice of race, these sailing instructions shall prevail.

# 7. Series Format, Courses and Scoring

## 7.1 Series Format

The Pre-Worlds regatta series will consist of a minimum of three (3) races.

The 2016 blokart World Championships regatta series will consist of a minimum of six (6) races.

No maximum number of races will be set, however no race shall start before 10:30hrs or after 18:00hrs, except on the final scheduled race day of the 2016 blokart World Championships, when no races shall be started after 15:00hrs.

In the event of a lack of wind, the PRO may abandon racing for the day prior to the time limits above.

Racing will take place in a timed format over a period of between five (5) to fifteen (15) minutes, after which time competitor are to continue sailing the course until such time as they have crossed the finish line. The timing systems results will be sorted on number of laps (high to low) followed by time taken (low to high) to give a position on line (POL) The competitor who has completed the most laps in the least time will be declared the winner of that race.

Races may not necessarily be run in full complete rounds of class and division, and the order of races is at the discretion of the PRO only.

## 7.2 Course Board and Courses

The courses to be used are defined by Appendix A.

A course board at the starting grid will advise the course number, start direction, countdown length and race length to be used for that race, and also a direction from the start line to the first mark.

For Example, the course board may show;

**Screen 1**



## Screen 2



Screen 1 denotes that course four (4) is to be sailed, and the course from the start line is towards the North as denoted by the "N".

Screen 2 denotes that the count down is to be 2 minutes and the race length is five (5) minutes.

These two screens will alternate before the countdown begins.

The course for the day may or may not be mentioned at briefing, and may be changed at any time during the day. It is up to the competitor to check the course board at the start grid when preparing for their race.

**New Courses may be defined at a briefing if required and will be drawn on the notice board. These courses will be denoted as course Zero (0) on the course board when in use.**

### 7.3 Scoring

The International blokart Racing Association (IBRA) rules edition 5 Part H, IBRA rule H.4 will not apply for either regatta.

In addition to the IBRA rules, after eight (8) races have been completed, a competitors worst result will be excluded from their total score. After Sixteen (16) races have been Completed the worst two results will be excluded from their total score. After twenty four (24) races have been completed the worst three results will be excluded from their total Score.

## 8. DISCLAIMER OF LIABILITY

### Liability

All competitors as a condition of entry must accept the following waiver.

**WAIVER:** In consideration for the right to participate in this event, I hereby hold the US Department of the Interior, Bureau of Land Management, the North American blokart Sailing Association and the event organizers, committee, and any person associated with the event harmless and release them from any and all liability in connection with my participation in the 2016 blokart World Championships. I further agree that the event may use without restriction any photograph, films or tapes in which I may appear for any purpose whatsoever.

*Please note: By agreeing on behalf of a participant less than eighteen (18) years old, the parent/guardian also expressly agrees to the above. In agreeing to this waiver I am stating; I have read it and understand it.*

All competitors will be asked to accept these terms when entering and again during registration.

## 9. INSURANCE

### 3rd Party Property Insurance

NABSA as the host, carries 3rd Party property insurance for all competitors during official races and practice times.

*Note: This does not include any sailing on race days either outside of the official race area or outside the official racing and practice times.*

Any sailing outside of the official race area and official sailing times is undertaken at your OWN RISK and 3rd Party property insurance is recommended by NABSA.

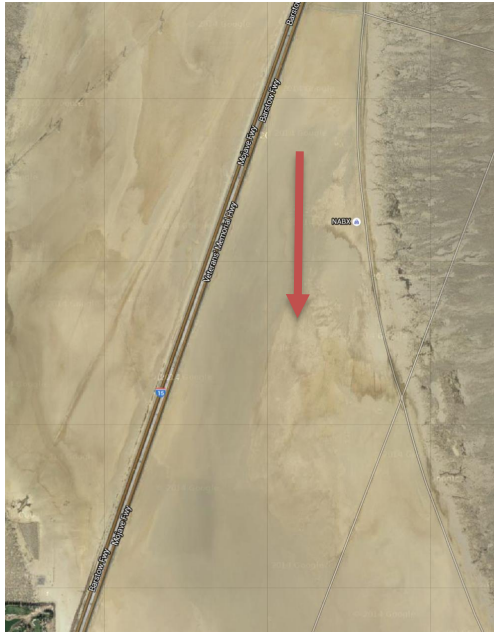
### Personal Insurance

NABSA does not carry personal insurance for any competitors. NABSA highly recommends that you, as a competitor or spectator, organize your own personal property and medical insurance. This may be your domestic insurance for American competitors or Travel insurance for international competitors, WE STRONGLY RECOMMEND that you check your policy before travelling to and competing in the event.

# Appendix A - Courses

## Legend

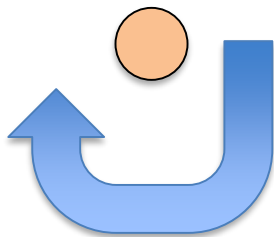
Start (N-S) denotes that the startline is to be crossed from North to South ie: from the Primm Valley side to the California side as shown below



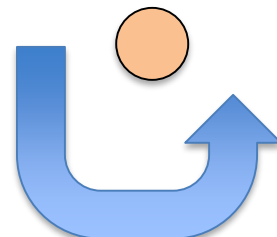
Start (S-N) denotes that the startline is to be crossed from the South to the North ie: from the California side to the Primm Valley side as shown below



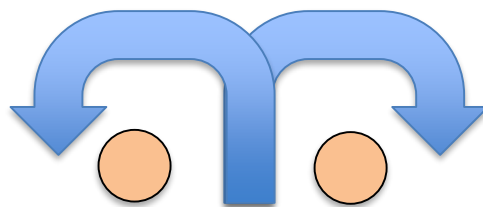
1(R) Denotes that mark 1 is to be rounded with a right hand turn



1 (L) denotes that mark 1 is to be rounded with a left hand turn



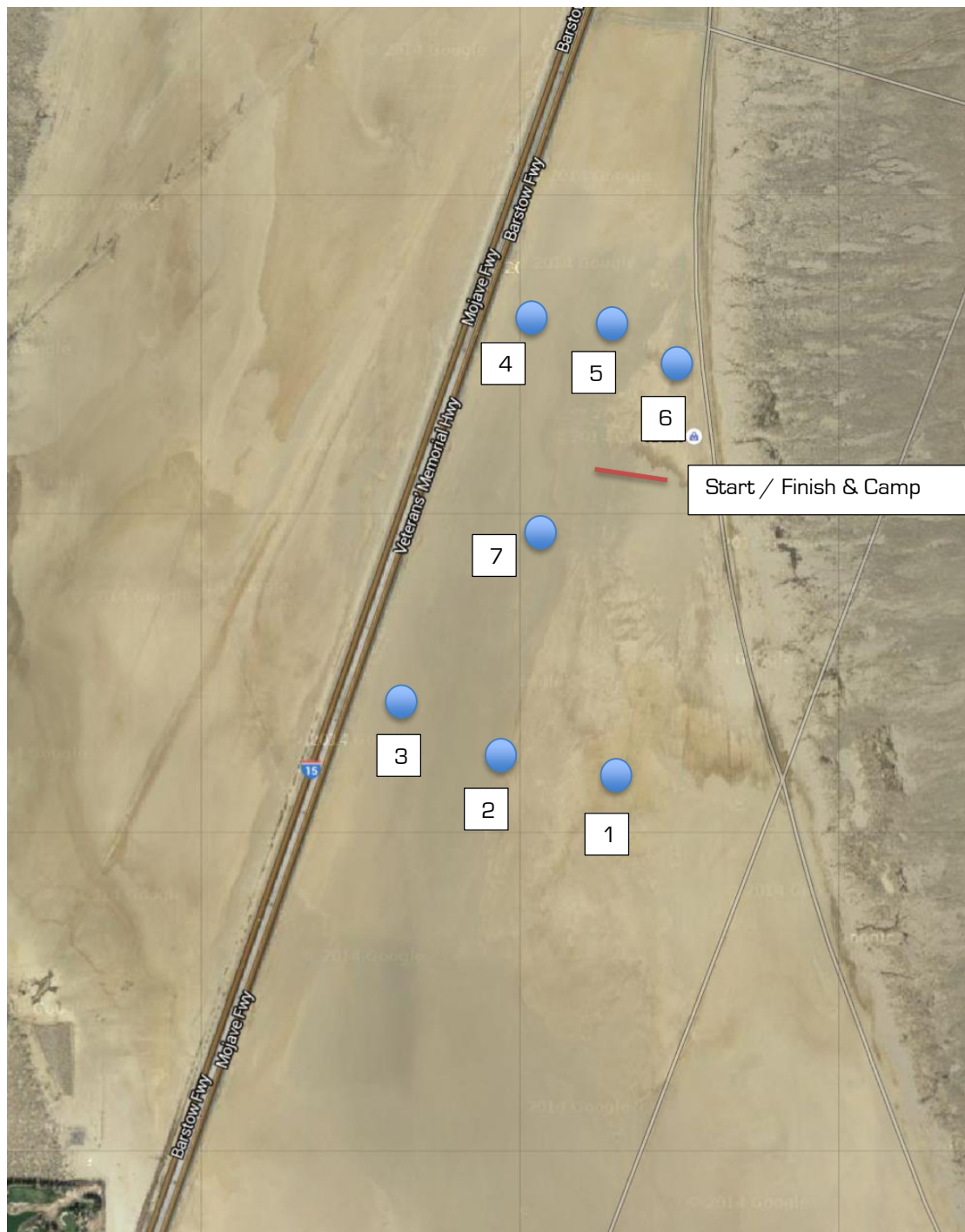
Gate (1,2) denotes that marks 1 and 2 are to be treated as a gate and rounded by passing between them as shown below





## Mark positions

The positions are indicative only, and may be moved slightly to position the course to the wind. All marks may be in position, but not necessarily used.



## Courses

<p><b><u>Course 1</u></b></p> <p>Start (N-S), 1 (R), 4 (R), Start (N-S), 1 (R)... repeat</p>	<p><b><u>Course 2</u></b></p> <p>Start (N-S), 3 (R), 6 (R), Start (N-S), 3 (R)... repeat</p>	<p><b><u>Course 3</u></b></p> <p>Start (N-S), 1 (R), 7 (L), 3 (R), 4 (R), 6 (R), Start (N-S), 1 (R)... repeat</p>
<p><b><u>Course 4</u></b></p> <p>Start (N-S), Gate (1,2), Gate (4,5), Start (N-S), Gate (1,2)... repeat</p>	<p><b><u>Course 5</u></b></p> <p>Start (N-S), Gate (2,3), Gate (5,6), Start (N-S), Gate (2,3)... repeat</p>	<p><b><u>Course 6</u></b></p> <p>Start (S-N), 6 (L), 3 (L), Start (S-N), 6 (L)... repeat</p>
<p><b><u>Course 7</u></b></p> <p>Start (S-N), 4 (L), 1 (L), Start (S-N), 4 (L)... repeat</p>	<p><b><u>Course 8</u></b></p> <p>Start (S-N), 6 (L), 7 (R), 4 (L), 3 (L), 1 (L), Start (S-N), 6 (L)... repeat</p>	<p><b><u>Course 9</u></b></p> <p>Start (S-N), Gate (5,6), Gate (1,2), Start (S-N), Gate (5,6)... repeat</p>

## Appendix B

### NABSA & BLM Rules

#### RULES AND STIPULATIONS FOR VANPAH DRY LAKE

This condensed version of the permit stipulations: It applies to all participants and guest.

#### SAFETY

A safety briefing will be held each morning during the competitors Pre Race meeting. All participants are required to attend.

First aid Station will be clearly marked and located in the camping area. Any serious Injury shall be reported to Wendy Kirkland, within 8 hours, 530-448-1020. In the event of serious injury call 9-1-1. Other emergency numbers will be posted in First Aid area.

Two-way radios channel will be announced at safety briefing and posted. If you see a safety hazard on the Dry Lake that has not been marked, contact an official.

#### VEHICLE USE

Speed limit is 30 MPH on the Dry Lake. Reduce speed to 10 MPH near pedestrians and camp areas. Do not enter Dry Lake if it is raining or wet. Enter Dry Lake only from gate in back of Lotto Store. Drive between the post and shoreline, staying 50' from the shoreline. Do not drive through ruts. Park only in marked parking area at campsite. Check under your vehicle before moving it for Desert Tortoises. Hand held cell phone use is prohibited by drivers in California and Nevada while driving.

#### WEATHER

Pay attention to the weather. If inclement weather is expected, we will have to evacuate the Dry Lake.

#### LEAVE NO TRACE

Each person is expected to pick up and remove their own trash each day from the Dry Lake and bring it back to the hotel. Store trash in your vehicle as the wind can blow it around. If you see some loose trash please pick it up. BLM will stop the event if it sees loose trash. Water from coolers should be drained in the shore line brush, not on the playa. All holes from flags or anchors should be filled in.

#### CAMPING RULES

Camping is permitted only in marked area. All camp fires will be contained in an above ground container and all ashes must be removed from the Dry Lake. A drip pan must be placed under any vehicle or generator with a leak to catch any leaks or spills.

### COMPLETE SET OF THE BLM PERMIT STIPULATIONS WILL BE POSTED IN MAIN CAMPING AREA